



FARMER –TO-FARMER (TWIGIRE) EXTENSION SYSTEM

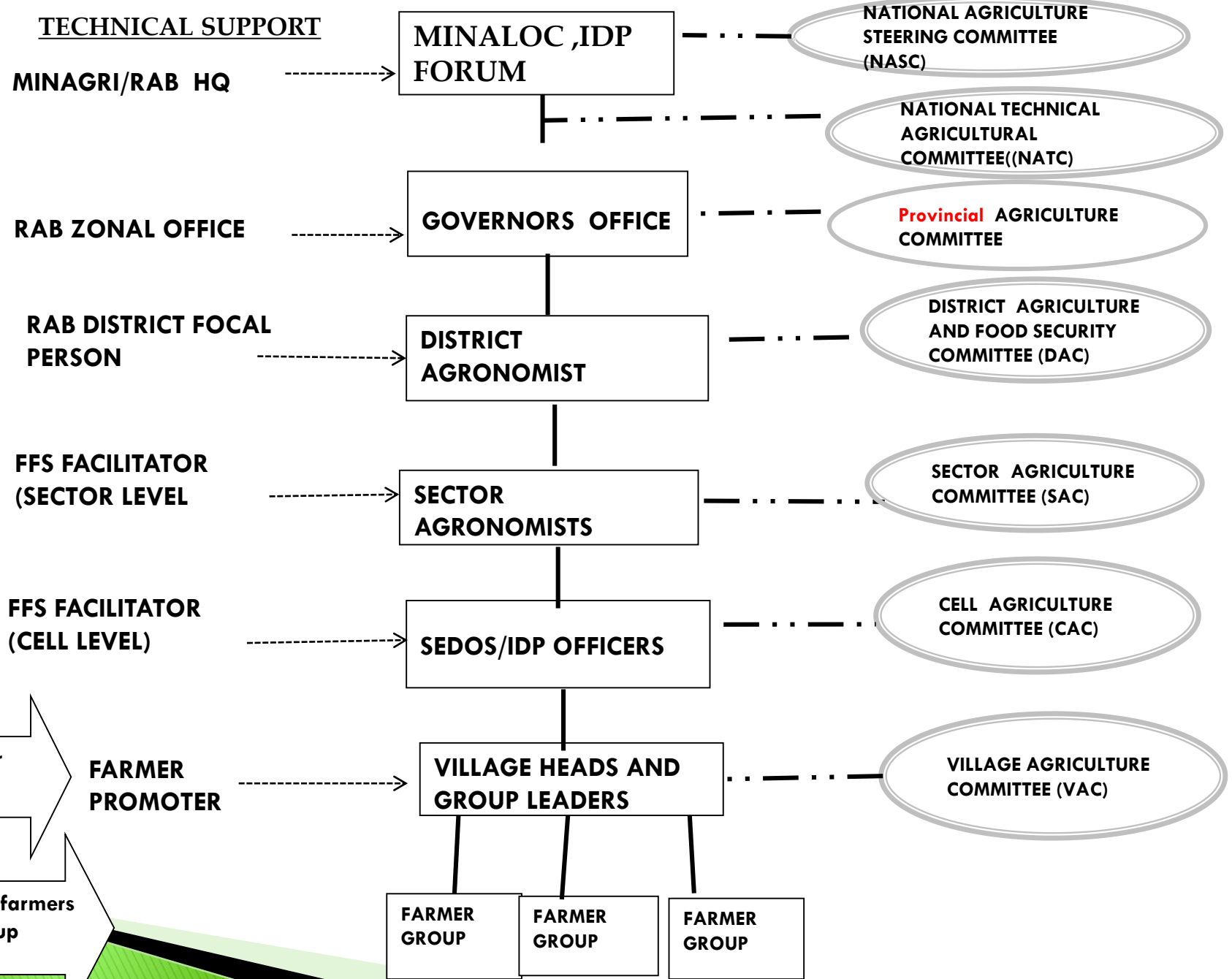


STRATEGIC FOCUS OF THE EXTENSION SYSTEM

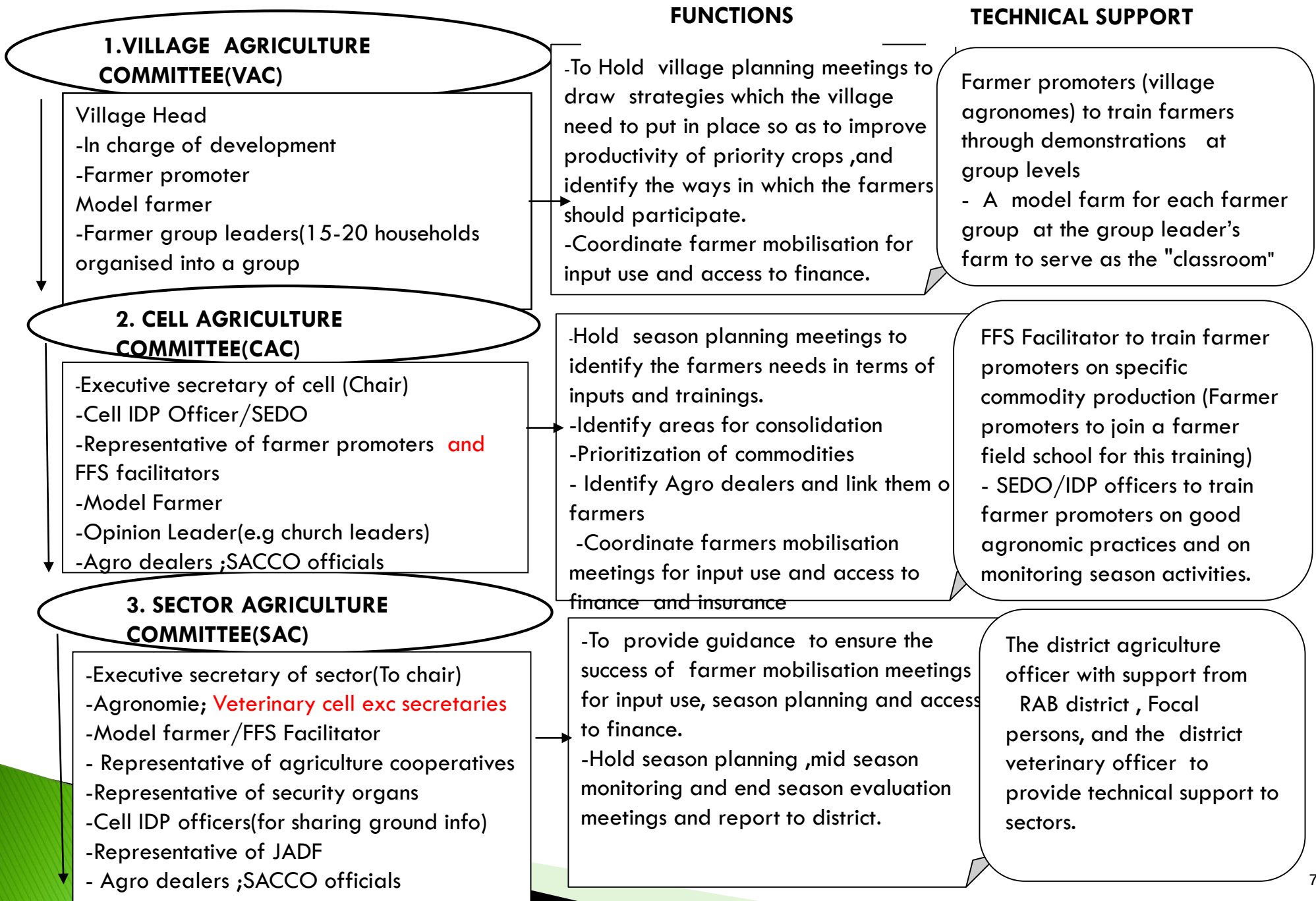
- ▶ A decentralized approach to empower districts and devolve decision-making management and implementation of agricultural activities to the village level.
- ▶ The farmers are organized into groups of 15- 20 farmers.
- ▶ Each farmer group select a group leader whose main role is to guide and supervise the group members in uptake of good agronomic practices.
- ▶ The farmer promoters are selected at one per village and trained in practical skills of crops as well as soft skills of planning and communication to act as the extension agents to other farmers in their respective villages.
- ▶ The FFS facilitators who are trained through the FFS approach are mapped out at cell level (one per cell) to train the farmer promoters.
- ▶ Agriculture committees are established at all levels to act as command post and the roles and responsibilities include Coordination ,Monitoring, Reporting, Mobilization and Advisory.
- ▶ **Permanent operation centre/secretariat composed of 2-3 members drawn from MINAGRI and MINALOC are established at districts and national level for day to day monitoring of the activities.**
- ▶ A national Agriculture Steering committee will oversee the implementation of activities and provide policy guidelines and report to IDP meeting.



TWIGIRE AGRICULTURAL EXTENSION STRUCTURE



ORGANISATION & FUNCTIONS OF TWIGIRE EXTENSION MODEL



4. DISTRICT AGRICULTURE & FOOD SECURITY COMMITTEE(DAC)

- District Mayor(To chair) security organs
- v/mayor in charge of economic development
- District Agronomie (Secretary)
- District Vetrinaryy
- Representative of agriculture cooperatives
- Representative of
- Representative of agro economic development dealers
- Representative of RAB
- In charge of cooperatives at district
- Permanent secretary of JADF at district .

FUNCTIONS

- Plan for district targets
- Develop workplans and Budgets needed to achieve district targets
- Coordinate farmers mobilisation meetings for access to inputs and to finance.
- Formulation of district season plans
- Supervise implementation of season plans by the sectors

TECHNICAL SUPPORT

RAB zone staff members with support from the district agronomists ,RAB district Focal persons, and the district veterinary officer to provide technical support to districts.

5.NATIONAL AGRICULTURE TECHNICAL COMMITTEE (NATC)

- MINAGRI/RAB (Coordination)
- MINALOC
- National Police

A national permanent secretariat established to coordinate and monitor district agriculture activities and report to the NASC on daily basis

The national CIP coordinator to manage the secretariat

6. NATIONAL AGRICULTURE STEERING COMMITTEE(NASC)

- Minister MINAGRI
- Minister MINALOC
- IGP
- Governors and Mayor, CoK (or the existing IDP steering committee)

The national steering committee to provide advisory services and to oversee policies and guidelines formulation and implementation

The MINAGRI national managteam to support the national steering committee

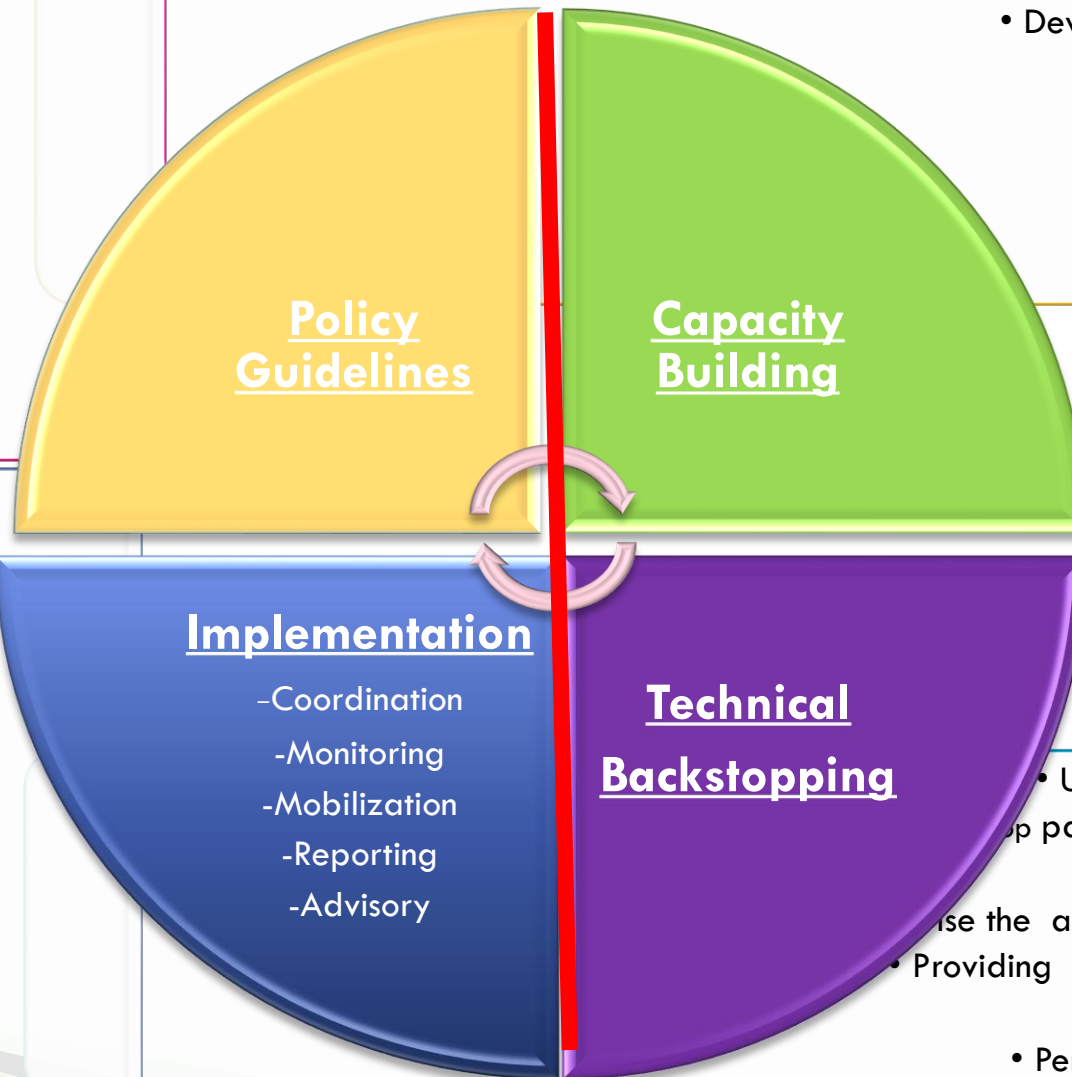
INSTITUTIONAL ROLES & RESPONSIBILITIES

MINAGRI

Preparation of guidelines, strategies and policies on agricultural extension.
Preparation of national standards, infrastructure and extension financing

RAB HQ

- Research on new technologies
 - e.g. pests and diseases
- Development of extension materials
- Technical assessment of seasons
- Monitoring of Season progress



DISTRICTS

- Identification of farmers needs
- Formulation of season plans
- -Mobilize farmers for access to inputs ,finance and for adoption of GAP
- Development of farmers organisations (Groups, cooperatives)

RAB ZONES

- RESEARCH
 - Undertake district based research
 - Develop packages to address farmers needs
- EXTENSION
 - Coordinate the activities of FFS facilitators and FPs
 - Providing identified technical backstopping
 - Monitoring season activities
 - Performance évaluation of districts.

MURAKOZE!

»» THANK YOU